

# Atlas Copco Refrigeration cycle dryers

FX 13, FX 14, FX 15, FX 16

## Parts list

From following serial No. onwards :  
CAI - 228 738

- Copyright 2006, Atlas Copco Airpower n.v., Antwerp, Belgium.  
Any unauthorized use or copying of the contents or any part thereof is prohibited.  
This applies in particular to trademarks, model denominations, part numbers and drawings.
- **Use only authorized parts.** Any damage or malfunction caused by the use of unauthorized parts is not covered by Warranty or Product Liability.

No. 2930 7016 00

2006 - 10

[www.atlascopco.com](http://www.atlascopco.com)

The Atlas Copco logo consists of the brand name "Atlas Copco" in a stylized, italicized serif font. The text is centered between two thick, solid black horizontal bars, one above and one below the text.

Contents  
Inhoud  
Innehåll  
Inhaltsverzeichnis  
Table des matières  
Indice

Indice  
Innholdsfortegnelse  
Indice  
Indholdsfortegnelse  
Sisällysluettelo

Air dryer  
Luchtdroger  
Lufttorkare  
Lufttrockner  
Sécheur d'air  
Secador de aire  
Essiccatore d'aria  
Lufttørrer  
Secador de ar  
Lufttørker  
Kuivain ..... 1

Bodywork  
Carrosserie  
Karosseri  
Karosserie  
Capotage  
Carrocería  
Cappottatura  
Karosseri  
Carroceria  
Kabinett  
Kotelo ..... 2

Start cubicle  
Startkast  
Startskåp  
Anlaßschrank  
Armoire de démarrage  
Cubículo de arranque  
Armadio apparecch. di avviamento  
Starterskab  
Cubículo-arranque  
Startskap  
Käynnistinkotelo  
- CE ..... 3

- CSA/UL ..... 4

Type	Code	V Dryer
FX 13	8102 2201 03	400V/50Hz 3ph CE
	8102 2202 02	460V/60Hz 3ph CSA/UL
FX 14	8102 2201 11	400V/50Hz 3ph CE
	8102 2202 69	460V/60Hz 3ph CSA/UL
FX 15	8102 2201 29	400V/50Hz 3ph CE
	8102 2202 77	460V/60Hz 3ph CSA/UL
FX 16	8102 2201 37	400V/50Hz 3ph CE
	8102 2202 85	460V/60Hz 3ph CSA/UL

**Notes:**

.....

.....

.....

.....

.....

.....

.....

.....

.....

.....

.....

.....

.....

.....

.....

.....

.....

.....

.....

.....

.....

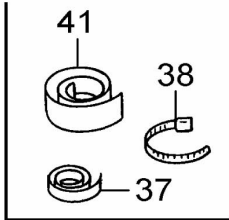
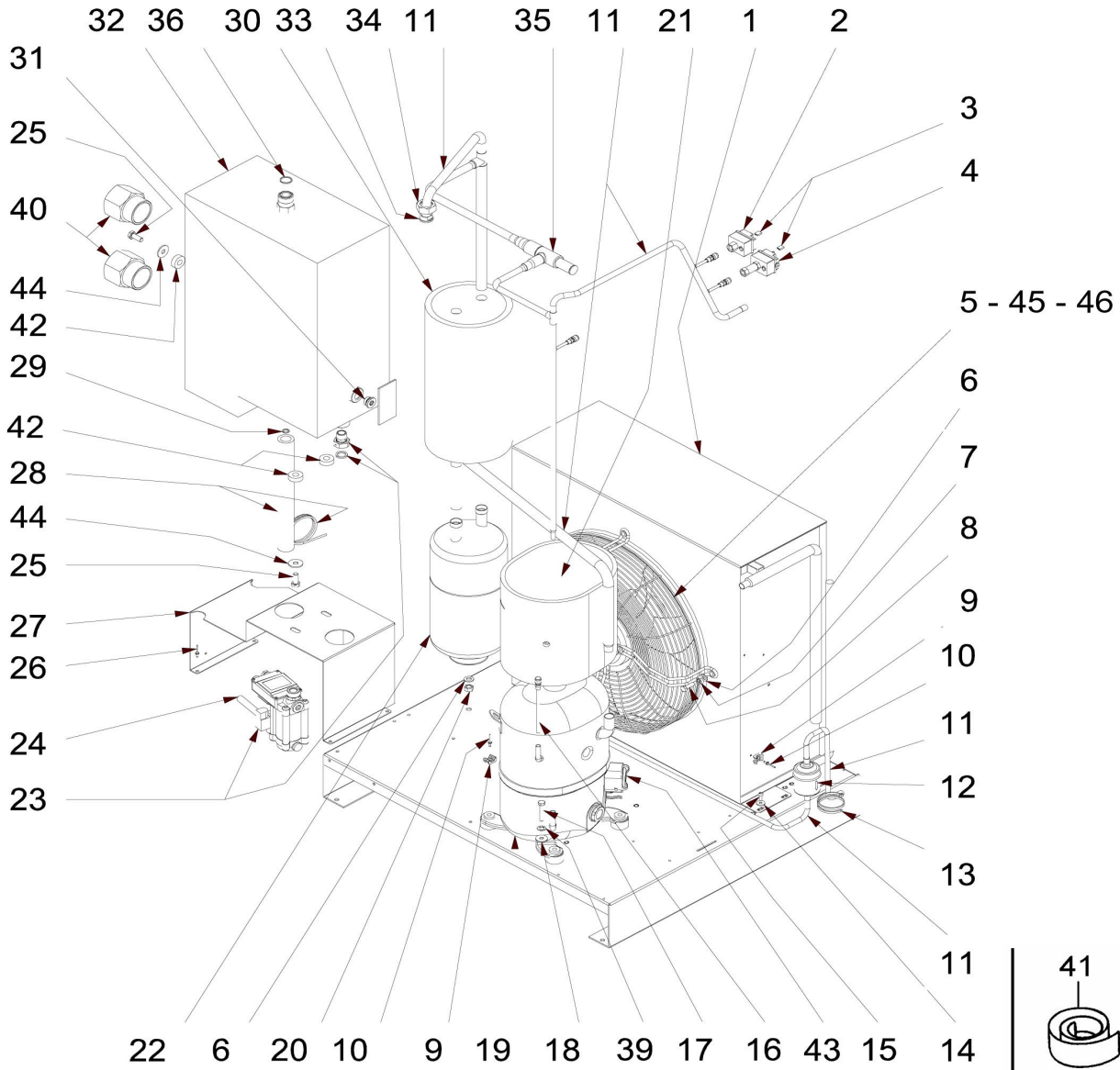
.....

.....

.....

.....

# 1

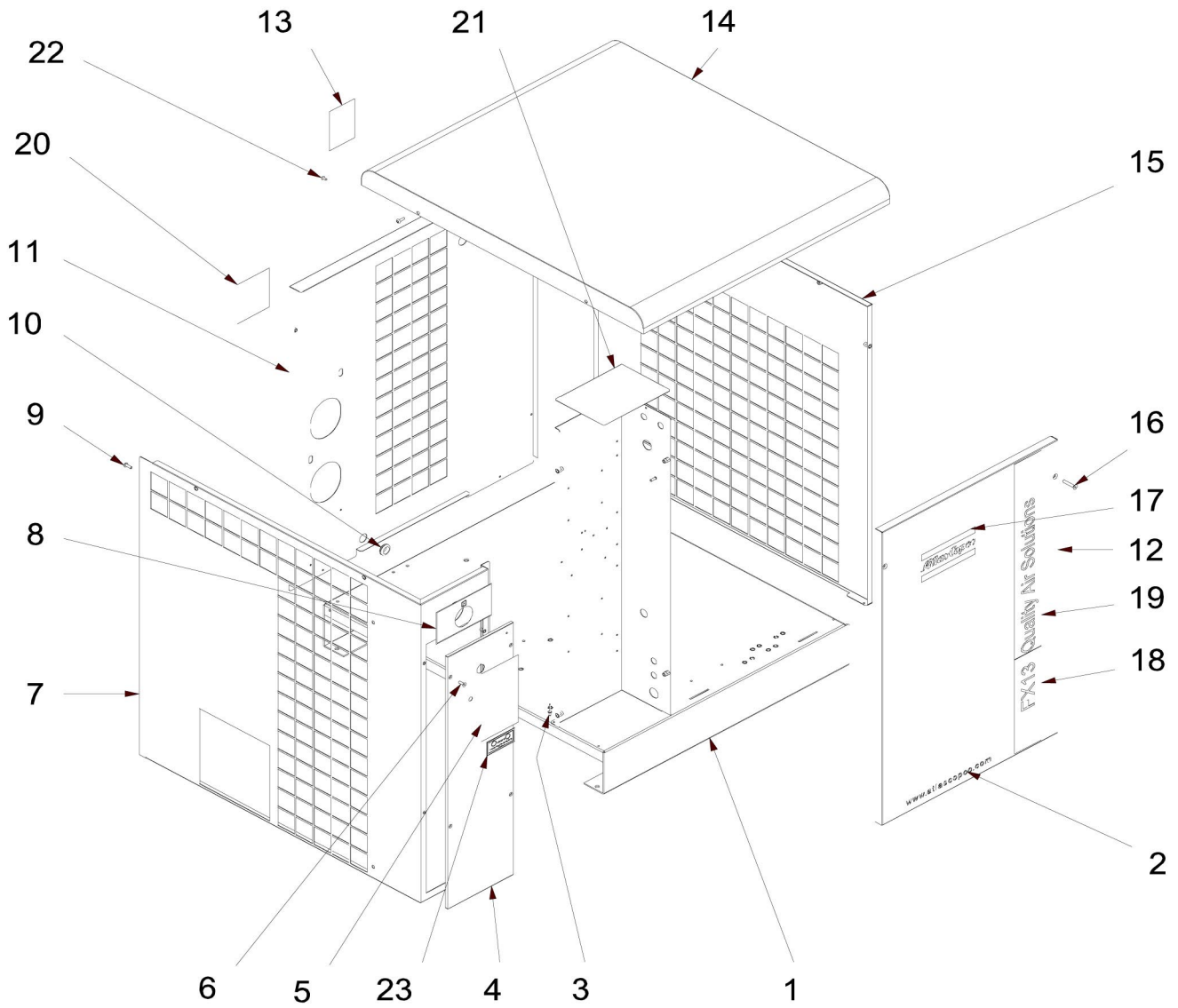


## Air dryer

1

Ref.	Part number	Qty	Name	Remarks	Ref.	Part number	Qty	Name	Remarks
1		1	Condenser		24	0070 6002 49	AR	Plastic tube	
	1624 2278 00		FX 13		25	0147 1362 03	4	Screw	
	1624 2290 00		FX 14		26	0129 3270 38	4	Blind rivet	
	1624 2291 00		FX 15		27	2202 8093 00	1	Stirrup heat exch.	
	1624 2292 00		FX 16		28		1	Capillary	
2	2202 7562 01	1	Pressostat			2202 8082 01		FX 13 CE	
3	2200 7099 06	2	Terminal cap			2202 8082 02		FX 13 CSA/UL	
4	2202 8155 01	1	Pressostat			2202 8082 02		FX 14 CE	
5		1	Fan assy			2202 8082 03		FX 14 CSA/UL	
	2202 8112 01		FX 13 CE			2202 8082 04		FX 15 CE	
	1624 2037 80		FX 13 CSA/UL			2202 8082 05		FX 15 CSA/UL	
	1617 2057 80		FX 14 CE			2202 8082 05		FX 16 CE	
	1617 2581 80		FX 14 CSA/UL			2202 8082 06		FX 16 CSA/UL	
	1617 2057 80		FX 15 CE		29	2202 7425 01	1	O-ring for rotalock	
	1617 2581 80		FX 15 CSA/UL		30		1	Insulation	
	1617 2057 80		FX 16 CE			2202 8180 00		FX 13	
	1617 2581 80		FX 16 CSA/UL			2202 8180 00		FX 14	
6	0301 2335 00	5	Washer			2202 8181 00		FX 15	
7	0333 3100 17	4	Washer			2202 8181 00		FX 16	
8	0147 1325 03	4	Screw		31	2202 7427 00	1	Plug	
9	0348 0110 03	2	Anchor		32		1	Heat exchanger assy	
10	0129 3270 40	2	Blind rivet			2202 7402 81		FX 13	
11		1	Pipe assy dryer			2202 7402 81		FX 14	
	2202 8152 80		FX 13			2202 7985 81		FX 15	
	2202 8153 80		FX 14			2202 7403 81		FX 16	
	2202 8154 80		FX 15		33		1	Sleeve	
	2202 8154 80		FX 16			2202 7466 09		FX 13	
12	1624 2293 00	1	Filter dryer			2202 7466 09		FX 14	
13	0348 0101 13	1	Cable tie			2202 7466 08		FX 15	
14	0300 0274 64	4	Washer			2202 7466 08		FX 16	
15	0215 0003 91	4	Screw		34	2202 7466 07	1	Nut	
16	2200 5997 43	1	Check valve		35		1	HG bypass valve	
17	0147 1329 03	4	Screw			2202 7324 03		FX 13	
18	0300 8019 00	4	Washer			1617 1524 04		FX 14	
19		1	Refrig.compressor			1617 1524 04		FX 15	
	1624 2294 05		FX 13			1617 1524 04		FX 16	
	1624 2295 04		FX 14		36	2200 6336 11	1	O-ring for rotalock	
	1624 2295 06		FX 15		37	0017 9862 67	AR	Tape	
	1624 2295 08		FX 16		38	0348 0101 20	10	Cable tie	
20	2200 7231 03	1	Nut		39	0333 4232 00	4	Washer	
21		1	Insulation		40		2	Bushing	
	2202 8318 00		FX 16			0605 8350 47		CSA/UL	
22		1	Liquid separator		41	2202 7587 01	AR	Tape	
	2202 8287 01		FX 13 CE		42	2202 7417 00	4	Washer	
	2202 8287 02		FX 13 CSA/UL		43		1	Overload protector	
	2202 8287 01		FX 14 CE			1617 1550 64		FX 13	
	2202 8287 02		FX 14 CSA/UL		44	0300 0274 17	4	Washer	
	2202 8078 00		FX 15 CE		45		1	Fan-motor	
	2202 8319 01		FX 15 CSA/UL			1617 2581 00		CSA/UL	
	2202 8078 00		FX 16 CE			1617 2057 00		CE	
	2202 8319 01		FX 16 CSA/UL		46	1617 2059 00	1	Grating	
23		1	Electric drain						
	2202 8159 01		FX 13						
	2202 8159 01		FX 14						
	2202 8159 01		FX 15						
	2202 8159 02		FX 16						

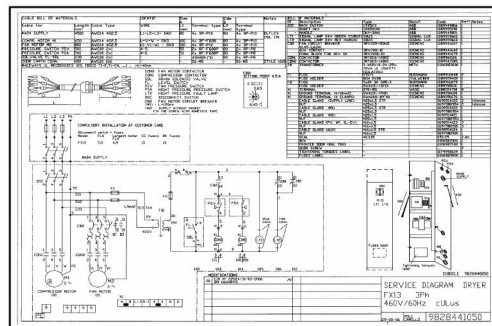
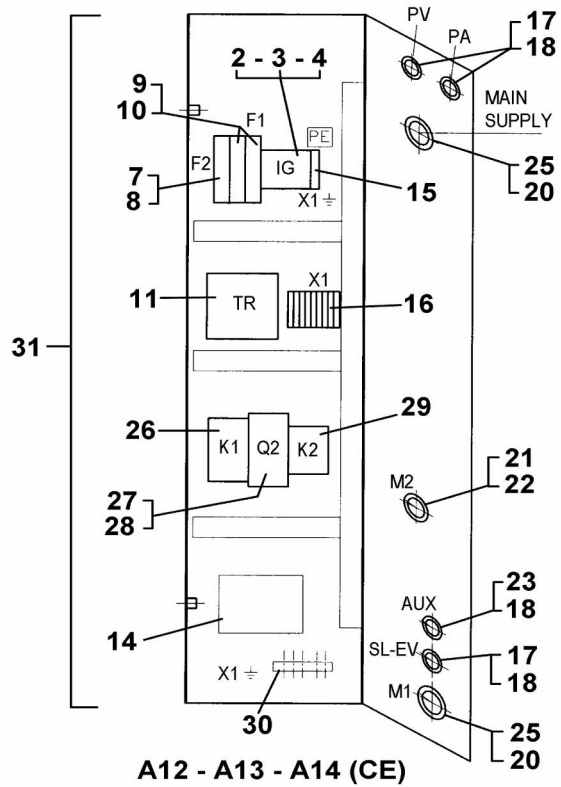
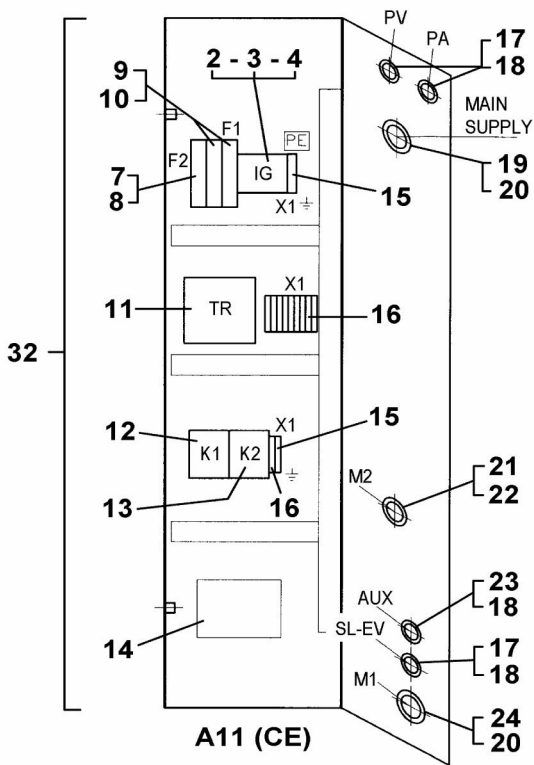
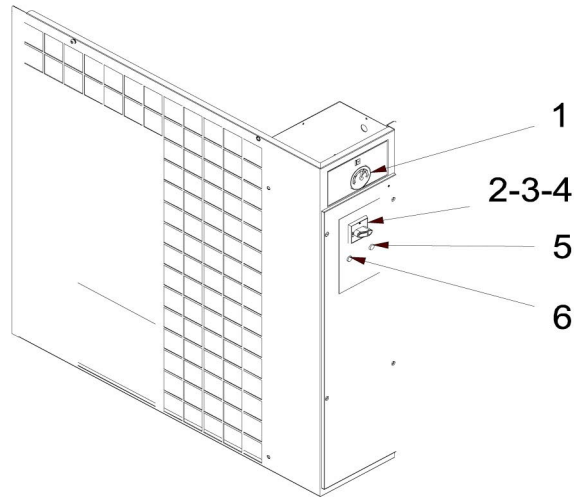
# 2



## Bodywork

Ref.	Part number	Qty	Name	Remarks	Ref.	Part number	Qty	Name	Remarks
1	2202 8063 02	1	Crankcase		17	2202 2603 49	1	Label atlas copco	
2	2202 2603 50	1	Label		18		1	Label	
3	0129 3270 40	15	Blind rivet			2202 7131 07		FX13	
4	2202 8071 82	1	Control panel			2202 7131 08		FX14	
5	2202 8269 01	1	Silk screen print			2202 7131 09		FX15	
6	0216 1957 59	2	Screw			2202 7131 10		FX16	
7	2202 8064 86	1	Left panel		19	2202 7121 00	1	Label	
8	2202 8189 01	1	Label instruction		20		1	Label	
9	0215 0003 91	8	Screw			2202 8248 00		FX 13 CSA/UL	
10	0989 4220 08	1	Grommet			2202 8249 00		FX 14 CSA/UL	
11	2202 8066 82	1	Rear panel			2202 8250 00		FX 15 CSA/UL	
12	2202 8069 86	1	Front panel			2202 8251 00		FX 16 CSA/UL	
13	1079 9903 48	1	Warning label		21	2202 8258 00	1	Cover el. Box	
14	2202 8068 01	1	Cover		22	0111 1686 12	1	Plug	
15	2202 8065 06	1	Right panel		23		1	Label	
16	2200 7116 01	2	Screw			2202 2610 68		CSA/UL	

3



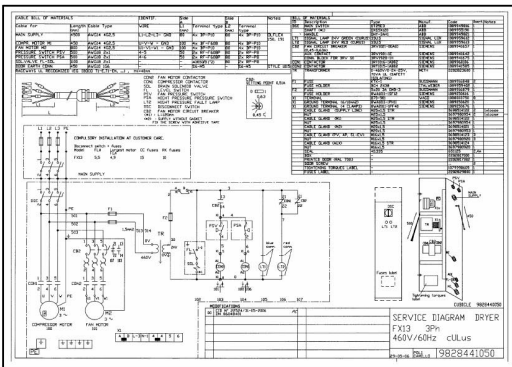
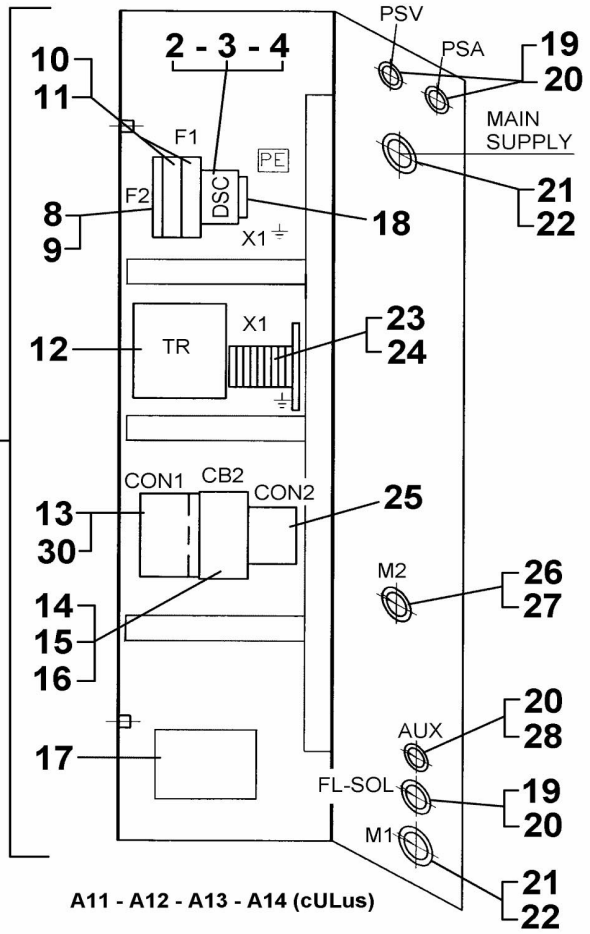
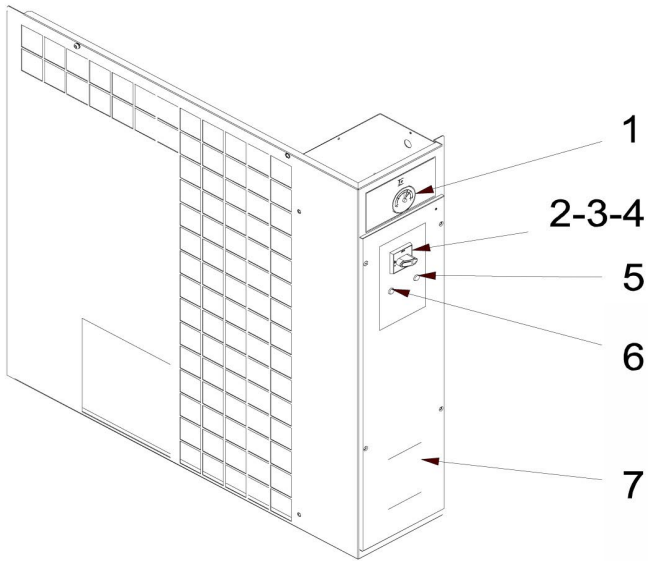


## Start cubicle - CE

## 3

Ref.	Part number	Qty	Name	Remarks	Ref.	Part number	Qty	Name	Remarks
1	2202 2608 91	1	Thermometer		24		1	Cable gland	
2	1089 9498 16	1	Switch			0698 5141 22		FX 13	
3	1089 9551 90	1	Shaft		25		2	Cable gland	
4	1089 9498 21	1	Handle			0698 5141 17		FX 14	
5	1089 9596 01	1	Signal lamp (red)			0698 5141 17		FX 15	
6	1089 9596 02	1	Signal lamp (green)			0698 5141 17		FX 16	
7	1089 0612 23	1	Fuse		26		1	Contactactor	
8	1089 9333 01	1	Fuse holder			1089 9578 11		FX 14	
9	1089 0612 22	2	Fuse			1089 9578 11		FX 15	
10	1089 9333 02	1	Fuse holder			1089 9578 11		FX 16	
11	2202 8233 00	1	Transformer		27		1	Fan circuit breaker	
12		1	Contactactor			1081 0420 18		FX 14	
	1089 9578 32		FX 13			1081 0420 18		FX 15	
13		1	Contactactor			1081 0420 18		FX 16	
	1089 9578 32		FX 13		28		1	Aux. Contact	
14	1079 9906 09	1	Label			1081 0420 32		FX 14	
15			Ground terminal			1081 0420 32		FX 15	
	1088 1510 02	2	FX 13			1081 0420 32		FX 16	
	1088 1510 02	1	FX 14		29		1	Contactactor	
	1088 1510 02	1	FX 15			1089 9578 32		FX 14	
	1088 1510 02	1	FX 16			1089 9578 32		FX 15	
16			Terminal			1089 9578 32		FX 16	
	1088 1510 05	11	FX 13		30			Terminal	
	1088 1510 05	9	FX 14			---		FX 14	
	1088 1510 05	9	FX 15			---		FX 15	
	1088 1510 05	9	FX 16			---		FX 16	
17	0698 5141 23	3	Cable gland		31		1	Cubicle dryer	
18			Nut			9828 4200 42		FX 14	
	0697 9809 20	4	FX 13			9828 4200 42		FX 15	
	0697 9809 20	3	FX 14			9828 4200 42		FX 16	
	0697 9809 20	3	FX 15		32		1	Cubicle dryer	
	0697 9809 20	3	FX 16			9828 4200 40		FX 13	
19		1	Cable gland		33		1	Service diagram	
	0698 5141 22		FX 13			9828 4210 40		FX 13	
20	0697 9809 54	3	Nut			9828 4210 42		FX 14	
21	0698 5141 21	1	Cable gland			9828 4210 42		FX 15	
22	0697 9809 53	1	Nut			9828 4210 42		FX 16	
23	0698 5141 24	1	Cable gland						

4



## Start cubicle - CSA/UL

Ref.	Part number	Qty	Name	Remarks	Ref.	Part number	Qty	Name	Remarks
1	2202 2608 91	1	Thermometer		20	0697 9809 20	4	Nut	
2	1089 9498 16	1	Switch		21	0698 5141 22	2	Cable gland	
3	1089 9551 90	1	Shaft		22	0697 9809 54	2	Nut	
4	1089 9498 21	1	Handle		23	1088 0037 50	8	Terminal	
5	1089 9596 13	1	Signal lamp (red)		24	1089 0506 76	1	Ground terminal	
6	1089 9596 12	1	Signal lamp (green)		25		1	Contact	
7	2202 8298 00	1	Fuses label			1089 9415 85		FX 13	
8	1089 9168 79	1	Fuse			1089 9415 17		FX 14	
9	1089 0506 16	1	Fuse holder			1089 9415 17		FX 15	
10	1089 9168 48	2	Fuse			1089 9415 17		FX 16	
11	1089 9594 02	1	Fuse holder		26	0698 5140 21	1	Cable gland	
12	2202 8236 00	1	Transformer		27	0697 9809 53	1	Nut	
13		1	Contact		28	0698 5141 24	1	Cable gland	
	1089 9601 06		FX 13		29		1	Cubicle dryer	
	1089 9415 28		FX 14			9828 4400 50		FX 13	
	1089 9415 28		FX 15			9828 4400 52		FX 14	
	1089 9415 28		FX 16			9828 4400 52		FX 15	
14		1	Fan circuit breaker			9828 4400 52		FX 16	
	1089 9416 57		FX 13		30			Aux. Contact	
	1089 9416 63		FX 14			1089 9415 09		FX 14	
	1089 9416 63		FX 15			1089 9415 09		FX 15	
	1089 9416 63		FX 16			1089 9415 09		FX 16	
15	1089 9416 42	1	Aux. Contact		31		1	Service diagram	
16	1089 9416 75	1	Conn. Block			9828 4410 50		FX 13	
17	1079 9906 09	1	Label			9828 4410 52		FX 14	
18	1089 0506 20	1	Ground terminal			9828 4410 52		FX 15	
19	0698 5141 23	3	Cable gland			9828 4410 52		FX 16	



# Atlas Copco Refrigeration cycle dryers

FX 13, FX 14, FX 15, FX 16

Parts list

What sets Atlas Copco apart as a company is our conviction that we can only excel in what we do if we provide the best possible know-how and technology to really help our customers produce, grow and succeed.

There is a unique way of achieving that - we simply call it the Atlas Copco way. It builds on **interaction**, on long-term relationships and involvement in the customers' process, needs and objectives. It means having the flexibility to adapt to the diverse demands of the people we cater for.

It's the **commitment** to our customers' business that drives our effort towards increasing their productivity through better solutions. It starts with fully supporting existing products and continuously doing things better, but it goes much further, creating advances in technology through **innovation**. Not for the sake of technology, but for the sake of our customer's bottom line and peace-of-mind.

That is how Atlas Copco will strive to remain the first choice, to succeed in attracting new business and to maintain our position as the industry leader.